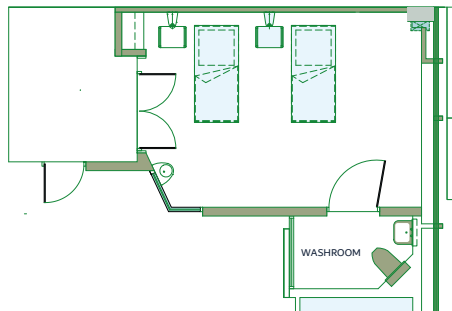




## Medical Ward

### Khalaf Ahmad Al Habtoor Medical Simulation Center

- Venue Type:** Simulated Medical Ward similar to a hospital semi private ward.
- Maximum Capacity:** 2 Patient beds (10-15 participants)
- Size:** Approx. 600 Square Feet
- Amenities:** The Medical Ward has mid fidelity simulators that are instructor-driven. These simulators are wireless, so they can be removed from the environment and placed outside or on the floor without having to be attached to an air supply or electricity as they have built-in compressor and batteries. The medical ward is equipped with Scotia Medical Observation & Training System (SMOTS) and has control rooms adjacent to it.
- Parking:** Dubai Health Care City provides a number of paid parking options for delegate guests.



Disclaimer: Layout is for illustrative purpose only