

Rashid Hospital is a multidisciplinary tertiary hospital, renowned for its excellent emergency and trauma centre. It is one of the busiest academic hospitals in the region which proved to be a valuable learning experience.

## Trauma Emergencies

The majority of the cases we observed were comprised of trauma emergency cases. These included gunshot wounds, stabbings, amputations, fractures, and others. From these cases, we observed the usage of different sutures and analgesics used with each patient.



## Surgical Emergencies

A significant number of emergencies were also surgical. Examples; appendicitis, nephrolithiasis, abdominal aortic aneurysm, and abdominal hernias. We learned the importance of rapid assessment, accurate diagnosis, and timely surgical action in treating these cases effectively.

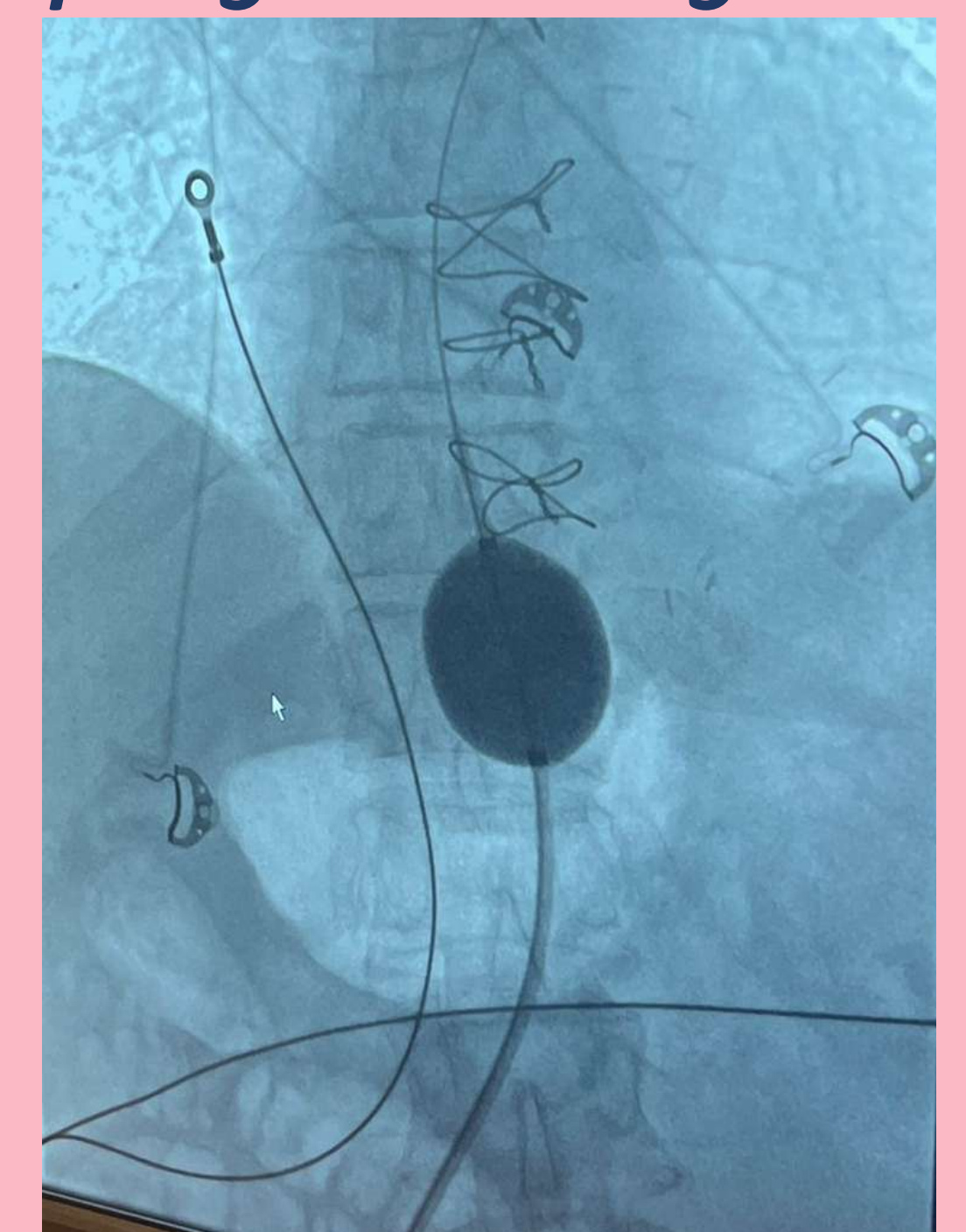
## Medical Emergencies

There were many cases of emergencies such as stroke, myocardial infarctions, anaphylactic shock, transient ischemic attack, Crigler-Najjar syndrome. These patients typically spent the least amount of time in the ED. They were either treated and discharged or transferred to a different department.



## Vascular Surgery

*“My experience of two weeks at the vascular surgery department was quite enriching. I was amongst a group of highly, experienced intellectual surgeons and interns that constantly provided for engaging and learning environment. My theoretical knowledge of anatomy and physiology was constantly applied in real life clinical setting. The mixture of clinics and OTs provided me to apply my FOCM skills as well as scrub in for surgeries or simply observe them. There were moments of inspiration which fuelled my sense of purpose, lessons that will be displayed in my actions and words in the future.”*



## Triage

The triage system enables the ED to be a highly efficient unit by streamlining initial assessment of emergency patients. Patients are triaged according to their vital signs and presenting complaints.

نظام تصنيف الحالات	
<b>TRIAGE LEVEL I - RESUSCITATION</b>	
Time to NURSE Assessment	IMMEDIATE *
Time to PHYSICIAN Assessment	IMMEDIATE *
<b>TRIAGE LEVEL II - EMERGENT</b>	
Time to NURSE Assessment	IMMEDIATE *
Time to PHYSICIAN Assessment	15 MINUTES *
<b>TRIAGE LEVEL III - URGENT</b>	
Time to NURSE Assessment	30 MINUTES *
Time to PHYSICIAN Assessment	30 MINUTES *
<b>TRIAGE LEVEL IV - LESS URGENT</b>	
Time to NURSE Assessment	60 MINUTES *
Time to PHYSICIAN Assessment	60 MINUTES *
<b>TRIAGE LEVEL V - NON URGENT</b>	
Time to NURSE Assessment	120 MINUTES *
Time to PHYSICIAN Assessment	120 MINUTES *



Our internship was a dynamic experience that exposed us to the fast-paced world of emergency medicine. Through observing medical professionals, witnessing the significance of teamwork and quick decision-making, we've gained valuable insights into patient care under pressure. This internship has solidified our interest in healthcare and highlighted the crucial role of effective communication and composure in delivering quality medical assistance.

